



Bethel Rays of Hope Ministries

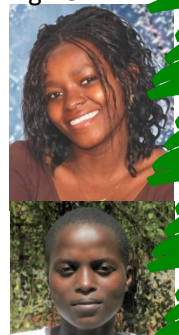
VISIT US AT WWW.BETHELRAYSOFHOPES.COM OR MAIL US AT BOX 778, STONEWALL, MB ROC 220

Dear Friends of Bethel Children's Home,

Greetings in Jesus' Name. We are anxious to share exciting news with you.

This fall we were able to take in Emily, age 4. With her older brother (9) and sister (7), she had lived with her elderly grandmother. Unfortunately, we were not able to bring her older siblings into the orphanage.

Esther, whom we have educated since she was 15 years old, will graduate on Dec. 6, 2013 from the University of Nairobi with her degree in Bio-chemistry. You may remember that we saved Esther from being married to a much older



man after grade 8. Evelyn who comes from an extremely poor community is now finished with her college training in Business Management. We thank the Lord that He allowed us to have a part in their development and training. Let us pray for job opportunities for these young people.

This year has been a struggle in many ways. As many of you know, the children had to leave the home that they had been in for many years. We were able to move them to temporary facilities. The Chamahs opened up their retirement home. It was much welcomed but it is almost an hour's drive out of Kisumu. So the household is up and on the road by 5:45am. They do not arrive back until 6:45pm. Needless to say, this is very hard on the children and they are sicker with colds and malaria. Financially, we find that 35% of our monthly budget is given over to transportation costs. That will be reduced by half once they are back into the city of Kisumu. Living back in Kisumu would also regain two extra hours every day.

Recently, Edith Chamah has been diagnosed with diabetes & thyroid. And we all know that when the mother of the home is sick, others have to take up the slack. We are so very thankful for Rose who has been with the Chamahs for the past 16 years when they took her in after her grandmother had passed away. Rose, our cook, continues to work alongside the Chamahs.



The most exciting news is that we are stepping out in faith. This is a hard thing to do but one we truly believe is the Lord's will. We mentioned already that presently transportation costs are very high, because the children are staying out of town. Further, because of the soil conditions in Kisumu, the best time to

construct a building is in the dry season of January to April. Therefore, Randy and Joan Porcher, together with David Derksen, all from New Life in Stonewall, are leaving just after the middle of January to travel to Kenya for two months to build the first permanent building – Bethel Home. It is a step of faith, because at present we do not have all the money yet, so they will build with the funds that come in. We have discovered a new building technique which makes the building cheaper and



faster to build. We are looking to those who would share our vision to make this project a reality. May we remind you that donations are income tax receiptable. You will find below the plans for the building. It is a simple, two story structure approx. 1000 sq. feet on the main floor.

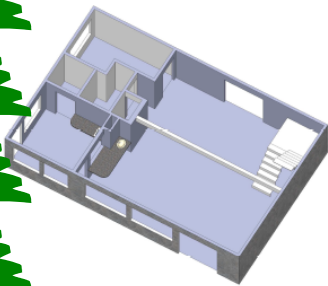
Equally pressing is the need to find people who will partner with us in supporting this family unit of orphans. Currently, the Chamahs have the responsibility of 18 children/young adults. These are either living with them or to whom we are financially responsible. In January we will be having almost \$4,000 in education costs, plus the regular household needs. Would you consider giving on a monthly basis?

Finally, would you consider the following in prayer: Edith Chamah was meeting with the Provincial Education Officer to ask if some of the high school students would be allowed to now attend day schools in Kisumu. Due to the upheaval with the bishop, we felt that the children were so unsettled and stressed by the tension caused by the situation that boarding schools was the only answer. Now, we can begin a life of a much more peaceful existence in our new home so we wish to have the children, as much as possible, attending regular day schools. Pray also for all the little details that are required both before leaving for Kenya and while there that the team might be a blessing to those there. We are still looking for others who might wish to join the team either for the whole time or part of the time. If you are interested, please either talk to one of the Board members or email board@bethelraysofhope.com

May you have a blessed Christmas remembering that Jesus is the reason for the Season.

Gratefully in Christ,

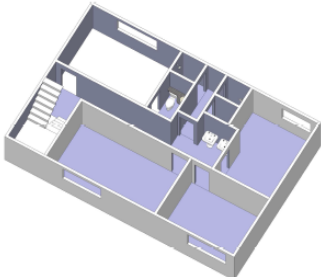
Bethel Rays of Hope Ministries Board



Main floor plans:

Kitchen facilities for this plus future expansion

Office, toilet & dining/study hall for current family plus future expansion



Second floor plans:

Four bedrooms: house parents; girls room; boys room & guest room

Toilet & two shower facilities

Donations can be made either by: cheque to Bethel Rays of Hope Ministries, e-transfers, or PayPal on the website. Unfortunately, we are not able, at this time, to offer pre-authorized donations. However, monthly cheques can be posted dated and send if you wish. For further information contact the treasurer@bethelraysofhope.com

PS: If you wish to receive this newsletter by email, please contact me and I will add your name to the list.

Thank you. Joan